

# WEDGE HF 532nm Plus

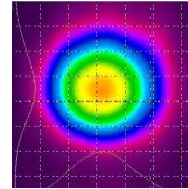
Spec. #: WHFP25901

## Diode Pumped Solid State Laser



### MAIN FEATURES

- \_ 532 nm
- \_ 700 ps
- \_ up to 110 uJ
- \_ Compact Design
- \_ Air Cooled



### Technical Specifications

Output Wavelength	532	nm
Q-Switch Repetition Rate	30 to 100 <i>(optional: 100 to 200)</i>	kHz
Average Power @ 50 kHz	> 3.5	W
Pulse Width	0.7 to 2	ns
Low Jitter Option (for direct Q-Switch driving)	< 300	ps
Pulse to pulse Energy stability (RMS)	< 2%	
Polarization	Linear 100:1 or circular	
M <sup>2</sup>	< 1.4	
Beam diameter (1/e <sup>2</sup> )	< 2.5 <i>(collimated)</i>	mm
Pulse frequency control input	TTL (0 to 5V)	
Energy level control input	0 to 5 V (Analog)	
Cooling	Air Cooling, integrated thermostatic fan	
Power supply input	24 V DC – < 7 A	
Control Connector	DB 25 pin	
Size of the unit	18 x 9 x 7	cm <sup>3</sup>
Weight	< 3	kg

### Options Available:

- Beam Expanding and Collimating optics
- Red aiming beam
- Water and contact cooling
- Laser Output Energy Monitor (external module)
- Laser pulse emission monitor (external module)

### Applications:

- Ablation / Micromachining of thin films
- LIDAR – LADAR - LIBS
- Bathymetry – Underwater LIDAR
- Specialty Scribing / Material processing



All information included in this document are subject to change without notice.

Updated data sheets can be provided on request.

For further details, please contact your local **Bright Solutions** sales representative or visit our website at [www.brightsolutions.it](http://www.brightsolutions.it)

**Bright Solutions Srl**

Via Artigiani, 27  
27010 Cura Carpignano - PV  
Italy

Ph. +39 0382583094

e-mail: [sales@brightsolutions.it](mailto:sales@brightsolutions.it)