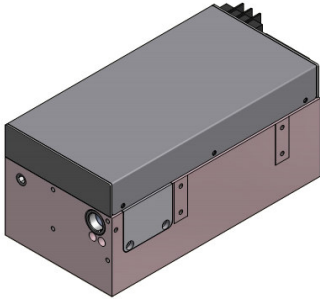


Iris 671nm

Spec. #: IRIS24401

Actively Q-Switched DPSS Laser



FEATURES

- _ 671nm output wavelength
- _ up to 4W average power
- _ Active Q-Switched up to 100 kHz
- _ All in one design
- _ Air-Cooled

Technical Specifications	Typical	
Output Wavelength	671	nm
Average Power	> 4 @ 100 kHz > 3.5 @ 50 kHz	W
Pulse Width	15 to 50	ns
Repetition Rate	50 to 100	kHz
Pulse to Pulse Energy Stability (RMS)	< 3%	
Polarization	Linear 100:1	
Beam diameter (1/e ²)	< 1	mm
Beam Quality (M ²)	< 1.5 @ 50 kHz	
Electrical Requirements	24 V DC IN – 300 W	
Cooling	Air Cooled	
Preliminary Mechanical Dimensions	235 x 105 x 95	mm ³
Weight	< 5	kg

Options Available:	Applications:
<ul style="list-style-type: none"> - Low jitter option - Water cooling - External Beam expander 	<ul style="list-style-type: none"> - Material processing - Special marking - Medical



All information included in this document is subject to change without notice.

Update data sheets can be provided after formal request.

For complete details, please contact your local **Bright Solutions** sales representative or visit our website at www.brightsolutions.it

Bright Solutions Srl

Via Artigiani, 27
27010 Cura Carpignano - PV
Italy

Ph. +39 0382583094

e-mail: sales@brightsolutions.it