
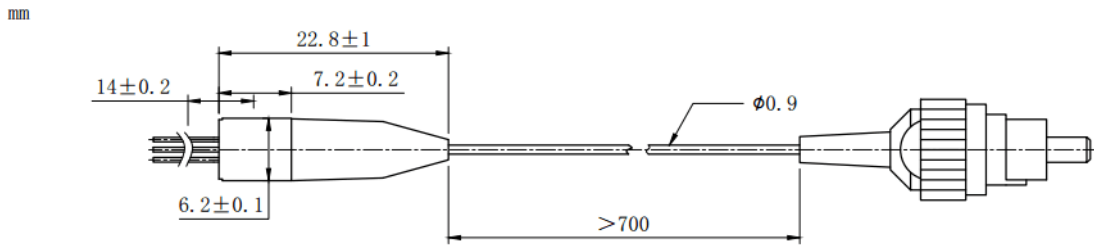


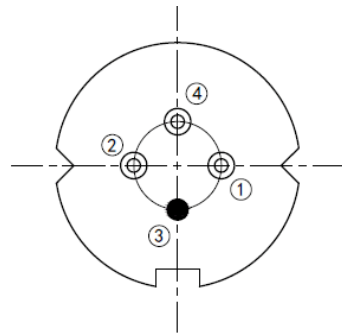
**1550nm 2mW FP Coaxial Pigtailed Laser Diode with 9um SMF 1550nm  
SM Fiber Coupled LD with Single Mode Fiber (SM Fiber)  
RWLP-1550-002m-9-FP**

PARAMETER	SYMBOL	VALUE	UNIT	
LD Reverse Voltage	$V_r$	2.0	V	
PD Reverse Voltage	$V_{r(PD)}$	15	V	
Operating Temperature	$T_{op}$	-40 ~ +85	°C	
Storage Temperature	$T_{stg}$	-40 ~ +100	°C	
Lead soldering temperature (10 sec.)	$T_{is}$	260	°C	
<b>Features:</b> <ul style="list-style-type: none"> <li>• 1550nm</li> <li>• FP Laser Diode</li> <li>• Built-in Photodiodes</li> <li>• 9um SM Fiber</li> <li>• Isolation Optional</li> <li>• Coaxial/Receptacle package</li> </ul>				
<b>Applications:</b> <ul style="list-style-type: none"> <li>• Test Equipments</li> <li>• Optical Transmitter of Analog Signal</li> <li>• Optical Transmitter of Data Signal</li> </ul>				
<b>Specifications</b>		<b>RWLP-1550-002m-9-FP</b>		
		<b>Min</b>	<b>Type</b>	<b>Max</b>
Center Wavelength@25°C		±5nm	1550nm	±10nm
Laser Type		FP		
Output Power		----	2mW	----
Fiber Core		9um SM Fiber		
Threshold Current (Typ.) $I_{th}$		----	5mA	15mA
Operating Current		----	30mA	35mA
Operating Voltage		----	1.3V	1.6V
Spectral Width(FWHM)		----	2nm	5nm
SMSR		----	35dB	----
Monitor Current		0.1mA	----	----
PD Capacitance		----	10pF	20pF
PD Dark Current		----	----	0.1uA
Package Style		Coaxial (Receptacle Optional)		
Recommended Operation Temperature		25°C		

**Coaxial Package View**



**Pin Bottom View (A-Type)**



PIN 1	PD (+)
PIN 2	LD (-)
PIN 3	LD (+), CASE
PIN 4	PD (-)

Electrically shorten LD module and store in non-extreme conditions.

Suggest using the constant current power supply.

