

SB1-1064-60-0.2

Spec. #: SB1-21102

Microchip Laser



MAIN FEATURES

- 1064 nm
- < 1.3 ns
- > 60 μ J
- Single Longitudinal Mode
- All-In-One Miniature Design

Technical Specifications

Output Wavelength	1064	nm
Pulse Repetition Rate	0.2	kHz
Pulse energy	> 60	μ J
Pulse Width	< 1.3	ns
Peak Power	> 45	kW
Short Term Output Energy Instability (St.Dev. Over > 10000 samples)	< 3 %	
Long Term Output Power Instability (Power log over 24 hours)	< 5 %	
Beam Quality (M^2)	< 1.3	
Output Beam Diameter at Exit Aperture (1/e ²) without beam expander	< 0.4	mm
Beam Divergence (half angle) without beam expander	< 5	mrad
Beam Ellipticity (axes ratio)	> 0.80	
Warm Up time after cold start	< 5	min
Power Consumption	< 20	W
Mechanical Package	SB1	
Operational Temperature Range	+10°C to +40°C	
Storage Temperature Range	-20°C to +60°C	

All information included in this document are subject to change without notice.

Updated data sheets can be provided on request.

For further details, please contact your local **Bright Microlaser** sales representative or visit our website at www.brightmicrolaser.com

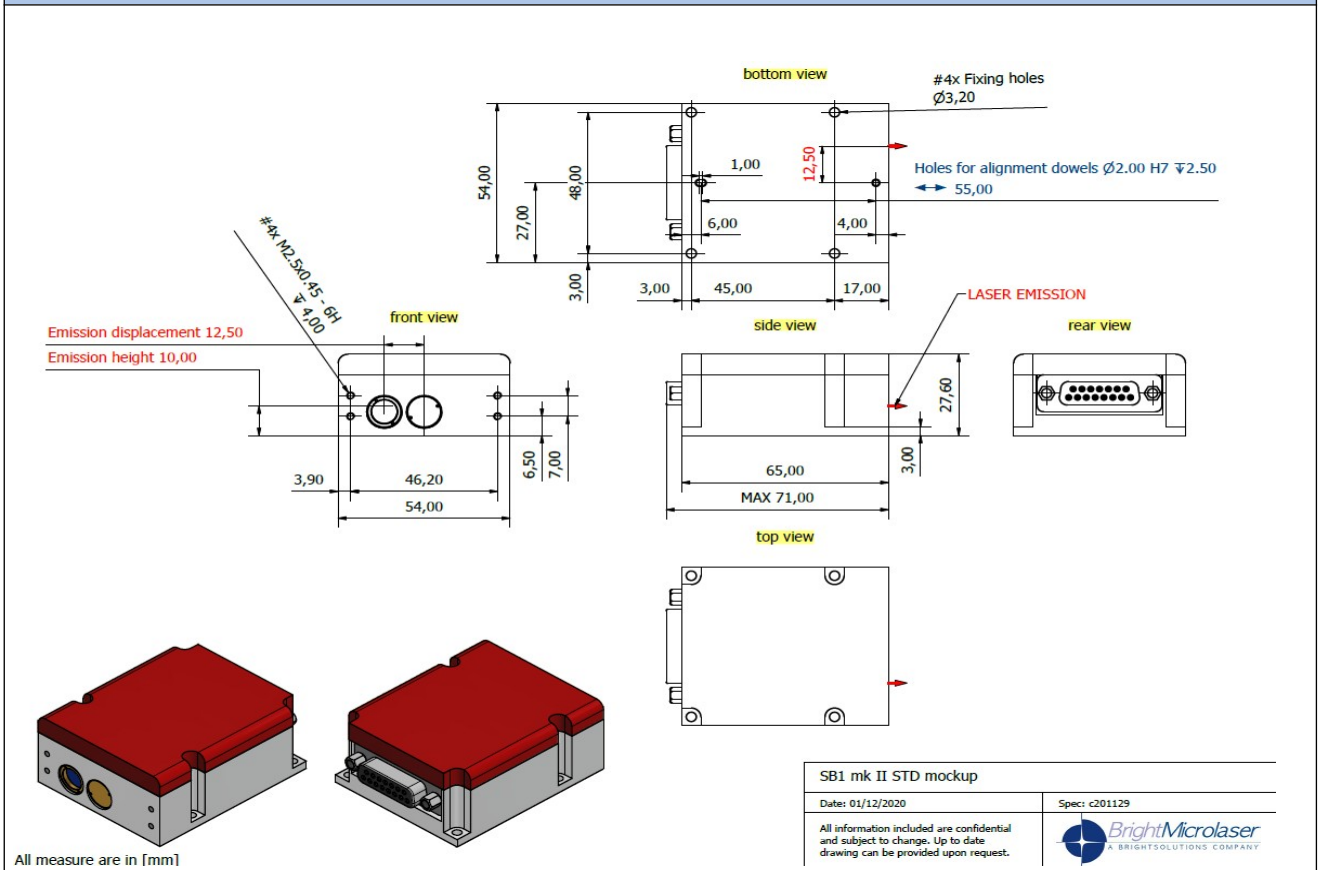
Bright Microlaser Srl

Via Artigiani, 21
27010 Cura Carpignano - PV
Italy

Phone: +39 0382 583094

e-mail: info@brightmicrolaser.com

Mechanical Drawings



Options Available:

- Beam Expander and Collimator
- Heat-sink
- Development kit
- Quick start/evaluation kit

All information included in this document are subject to change without notice.

Updated data sheets can be provided on request.

For further details, please contact your local **Bright Microlaser** sales representative or visit our website at www.brightmicrolaser.com

Bright Microlaser Srl
Via Artigiani, 21
27010 Cura Carpignano - PV
Italy
Phone: +39 0382 583094
e-mail: info@brightmicrolaser.com