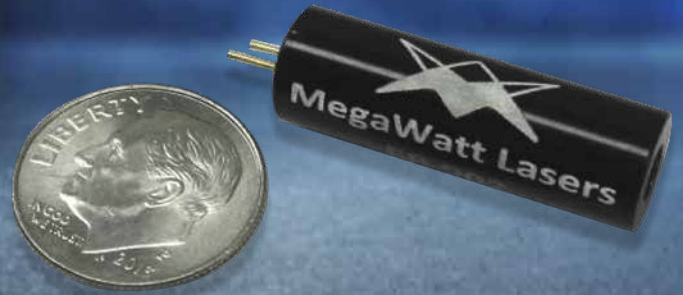


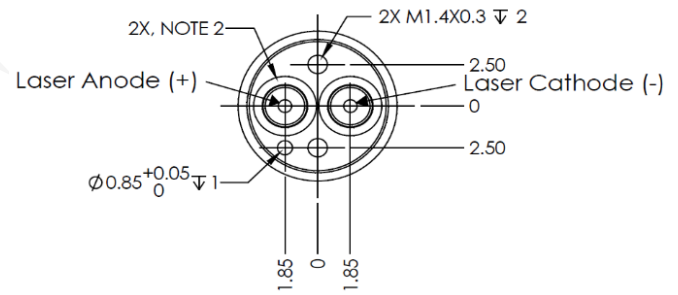
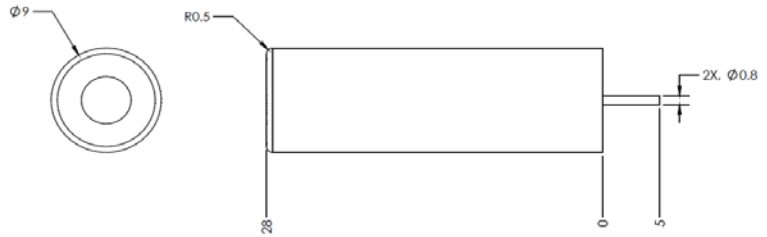
ER902 MINIATURE SOLID-STATE LASER 75kW Peak Power 1.54 μm



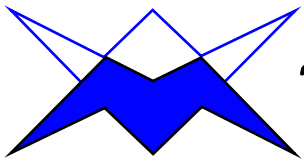
DIODE-PUMPED, PASSIVELY Q-SWITCHED, ER:GLASS, PACKAGED

STANDARD

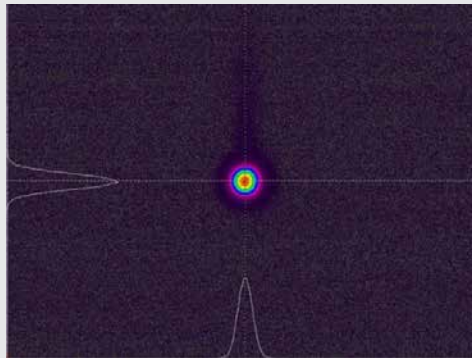
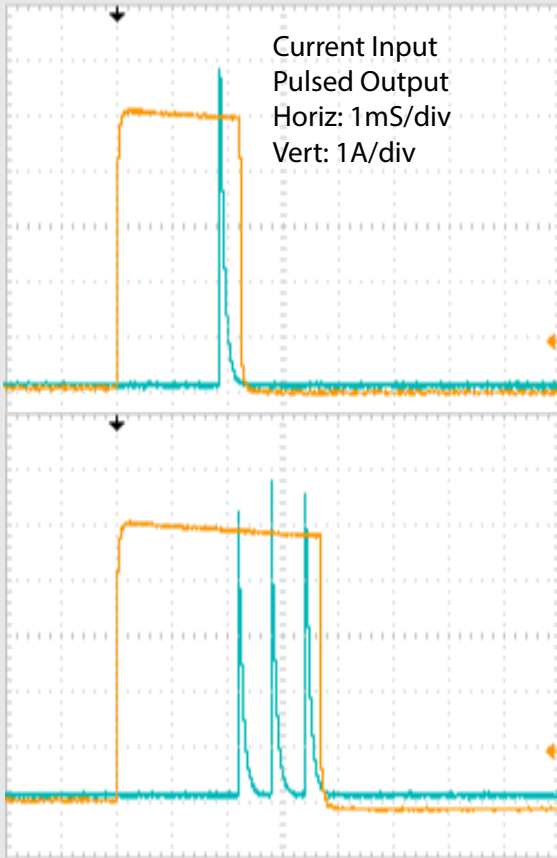
Parameter	Nominal Value
Wavelength:	1.535 μm
Pulse Energy:	200 μJ nominal
Pulse Width:	Approx. 4 ns
Build-up Time:	~ 2.0 mS typical
Peak Power:	50 - 75 kW
Repetition Rate:	Single shot to 10Hz <i>Burst mode available</i>
Life:	10^7 shots
Operational Temperature:	-40 to 65°C
Beam Quality:	TEM ₀₀₀ , Near Diffraction Limited
Divergence:	~ 7 mRad
Power Requirement:	≤ 6 Amp Pulse, 2V 2.0V compliance
Standby Power:	not required
Cooling:	not required
Lead solder time:	320°C, 10 Sec maximum



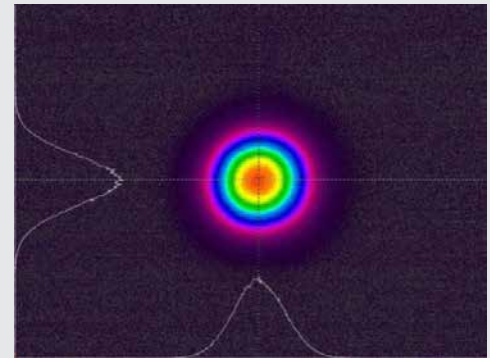
For more information contact: info@rpmclasers.com



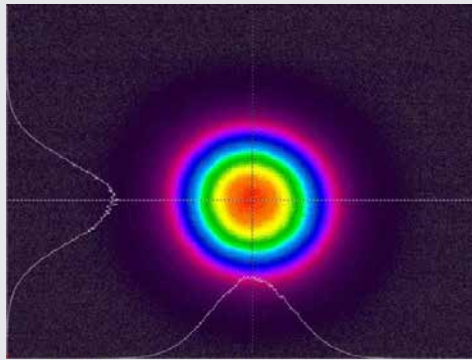
D4 σ DIVERGENCE = ~7MRAD
BEAM QUALITY IS < 1.3 DIFFRACTION LIMITED



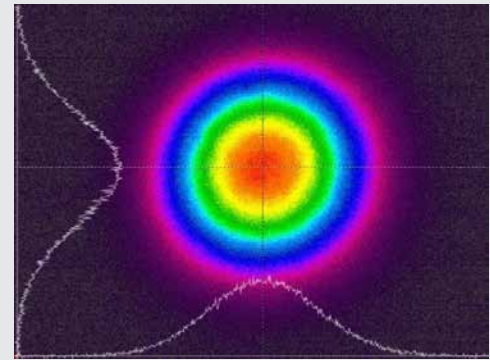
78 mm from Output Coupler
d4 σ *X=0.679mm
d4 σ *Y=0.587mm



180 mm from Output Coupler
d4 σ *X=1.46mm
d4 σ *Y=1.41mm



280 mm from Output Coupler
d4 σ *X=2.24mm
d4 σ *Y=2.36mm



400 mm from Output Coupler
d4 σ *X=2.96mm
d4 σ *Y=2.92mm

For more information contact: info@rpmclasers.com