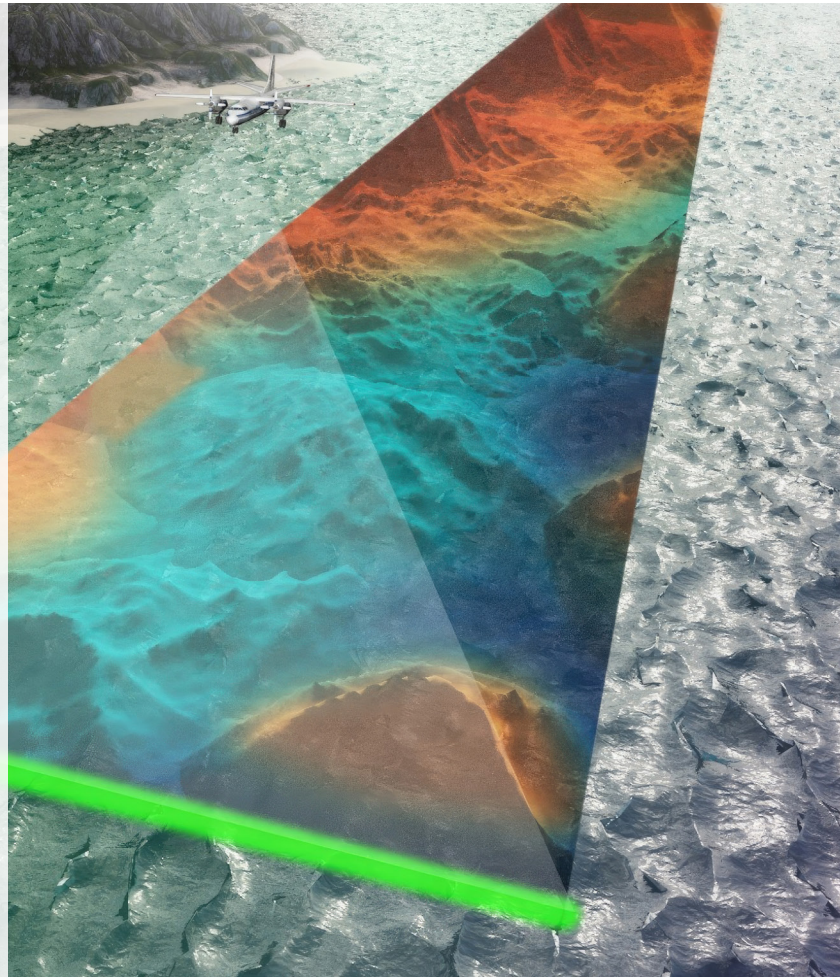




# AIRTRAC<sup>®</sup>-532

---



Areté's AIRTRAC-532 Laser is a ruggedized laser capable of both 1064 nm and 532 nm output wavelengths with >70 mJ total pulse energy. AIRTRAC-532 Laser provides Flash LIDAR capability in a very compact, lightweight and low power configuration. The athermal design provides high laser pulse energy over the full MIL-SPEC temperature range with full system weighing less than 500 grams. AIRTRAC-532 laser has established a new standard in size for lasers of this class.

## Key Features

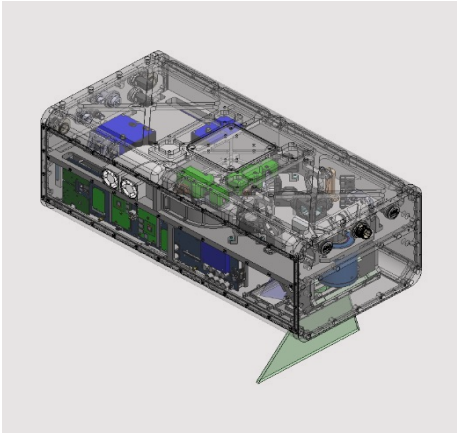
- Compact efficient athermal laser
- Patented technology for increased efficiency and long life performance
- High pulse energy
- Cavity Dimensions: 4.0"x 1.5"x 1.5"
- Dual wavelength and Flash LiDAR capability
- Reduced heat load
- No significant warm-up time
- Capable of continuous operation
- Shock and vibration hardened
- Compact electronics configuration included
- Fully sealed laser cavity



POC: | [Airtrac.Sales@arete.com](mailto:Airtrac.Sales@arete.com)  
Business POC: Jay Rouse, (571) 255-4035 | [jrouse@arete.com](mailto:jrouse@arete.com)  
Areté | 9301 Corbin Ave. Northridge, CA 91324 | [arete.com](http://arete.com)  
All Rights Reserved | Approved for Public Distribution | Copyright © 2023 Areté



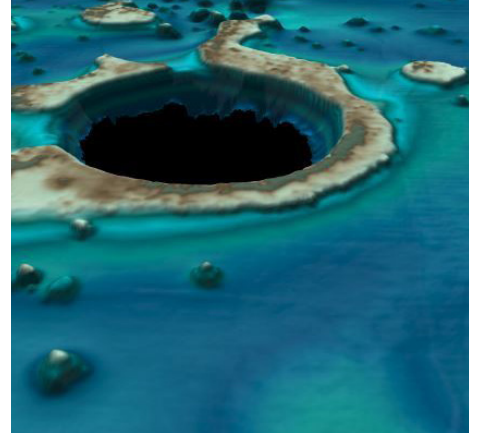
# AIRTRAC®-532



AIRTRAC-532 Laser in Fugro RAMMS 3



532 Laser Electronics: 3.0" x3.0" x1.5"



RAMMS aerial mapping

| Parameter                       | Range               |         |       | Comments  |
|---------------------------------|---------------------|---------|-------|---|
|                                 | Min                 | Typical | Max   |   |
| Weight                          | 500 g               |         |       | 112501 AIRTRAC-532 Laser with Electronics and Electronics Container |
| Wavelength                      | 1.064 um & 0.532 um |         |       |   |
| Output Energy per Pulse         | >35 mJ              |         |       | Energy out of 0.532 um wavelength                                   |
|                                 | >35 mJ              |         |       | Energy out of 1.064 um wavelength                                   |
|                                 | >70 mJ              |         |       | Total pulse energy  |
| Pulse Width                     | 4ns to 7ns          |         |       |   |
| Rep Rates                       | 0 Hz to 25 Hz       |         |       |   |
| Pulse to Pulse Energy Stability | <10% typ            |         |       |   |
| Secondary Pulses                | None                |         |       |   |
| Average Standby/Arm Power       | <10 W               |         |       |   |
| Average Power Draw (total)      | <10 W               | <25 W   | <48 W | Values taken at 24 VDC and at pulse frequency of 30Hz               |
| Peak Current                    | 2.5 A               | 2.8 A   | 3.5 A | Values taken at 24 VDC and at pulse frequency of 30Hz               |
| Operational Temp Range          | -30C to +50C        |         |       |   |
| Storage Temp Range              | -40C to +85C        |         |       |   |

