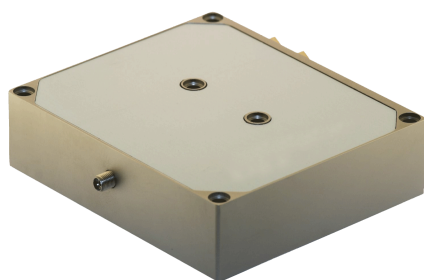


BDL 130-808-F4-F

Fiber coupled laser diode module



FEATURES

- _ High Brightness
- _ Integrated Industrial Design
- _ Passively Cooled
- _ Long Lifetime
- _ Small Footprint
- _ High Reliability
- _ CE Compliant

| Technical Specifications | Minimum | Typical | Maximum | |
|--------------------------------------|---------|---|---------|-------|
| CW Output Power ⁽¹⁾ | | 130 | 135 | W |
| Center Wavelength ⁽²⁾ | 805 | 808 | 811 | nm |
| Center Wavelength Tolerance | | ± 3nm (option: wavelength tolerance ± 10 nm) | | nm |
| Spectral Width (FWHM) | | 4 | 6 | nm |
| Operating Temperature ⁽³⁾ | 15 | 25 | 35 | °C |
| Wavelength Coefficient | 0,27 | | 0,30 | nm/°C |
| Fiber Connector | | SMA-905 | | |
| Fiber Core Diameter | | 400 | | µm |
| NA | | 0.22 | | |
| Built-In Thermistor | | NTC – 10kOhm – 25°C ⁽⁴⁾ | | |
| Operating Current | 58 | 62 | 64 | A |
| Operating Voltage | 5.1 | 5.4 | 5.7 | V |
| Cooling | | Conductive | | |
| Electro-Optical Efficiency | | 33% | | |
| Storage temperature ⁽⁵⁾ | | 0 : 60 | | °C |
| Humidity | | <95% non condensing | | |

⁽¹⁾ Output power archive at nominal current, out of a 2m long power optical fiber

⁽²⁾ At nominal current and nominal temperature on internal NTC thermistor

⁽³⁾ Measured on internal thermistor.

WARNING: Ambient humidity must not be condensing on the device at operating temperature

⁽⁴⁾ Temperature coefficient $B_{25/100}=3988 \pm 1\%$, Resistance tolerance $\pm 2\%$

⁽⁵⁾ Storage and shipping of diode lasers must be done with shortened electrical contacts and in a clean non condensing environment



All information included in this document are subject to change without notice.

Update data sheets can be provided after formal request.

For complete details, please contact your local **Bright Solutions** sales representative or visit our website at www.brightsolutions.it

Bright Solutions S.r.l

Via Artigiani, 27010
Cura Carpignano (Pv) Italy

Ph. +39 0382583091

Fax. +39 0382583690

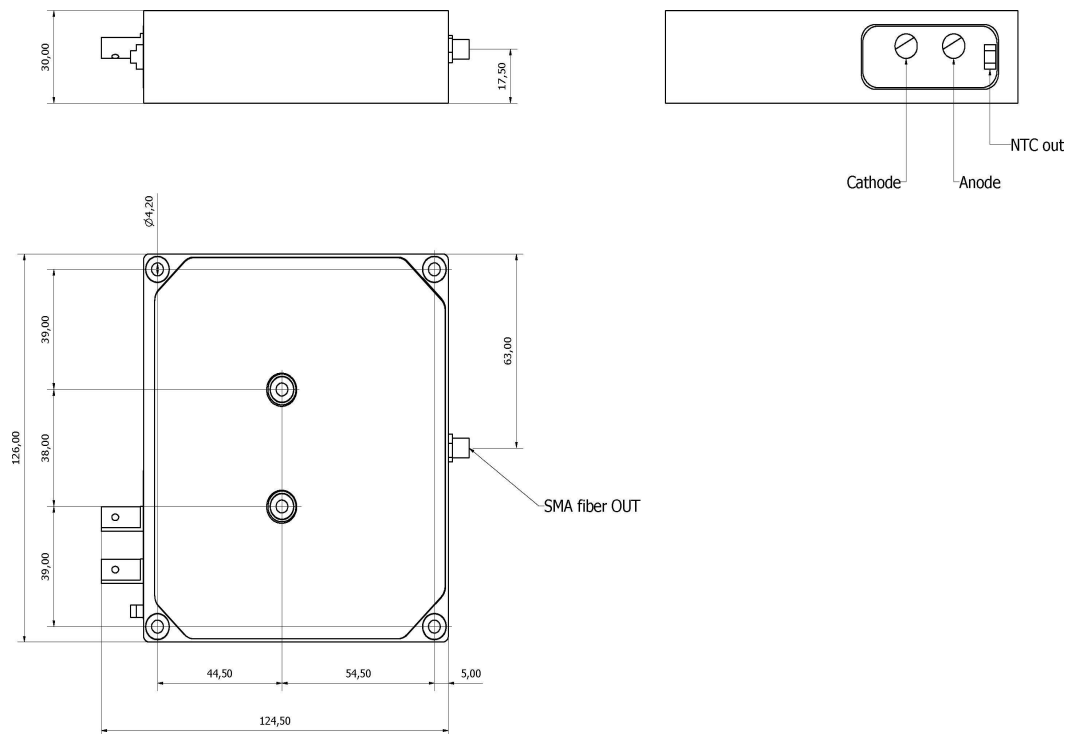
e-mail: info@brightsolutions.it

www.brightsolutions.it

BDL 130-808-F4-F

Fiber coupled laser diode module

Mechanical Drawing



dimensions in mm

Options Available:

- Red Aiming Beam
- Monitoring Photodiode
- Alternative PT100 thermistor
- Integrated TE Coolers
- Fiber Sensors

Applications:

- Solid State Laser pumping
- Fiber-lasers pumping
- Soldering and Welding
- Medical
- Illumination
- Material Processing



All information included in this document are subject to change without notice.

Update data sheets can be provided after formal request.

For complete details, please contact your local **Bright Solutions** sales representative or visit our website at www.brightsolutions.it

Bright Solutions S.r.l

Via Artigiani, 27010
Cura Carpignano (Pv) Italy

Ph. +39 0382583091

Fax. +39 0382583690

e-mail: info@brightsolutions.it

www.brightsolutions.it