

SB1-236.5-2-0.5

Spec. #: SB1-21205

Microchip Laser



MAIN FEATURES

- 236.5 nm
- < 1.3 ns
- > 2 uJ
- Single Longitudinal Mode
- All-In-One Miniature Design

Technical Specifications

Technical Specifications		
Primary Output Wavelength	236.5	nm
Pulse Repetition Rate	0.5	kHz
Pulse energy	> 2	uJ
Pulse Width	< 1.3	ns
Peak Power	> 1.5	kW
Short Term Output Energy Instability (St.Dev. Over > 10000 samples)	< 3 %	
Long Term Output Power Instability (Power log over 24 hours)	< 5 %	
Beam Quality (M ²)	< 1.5	
Output Beam Diameter at Exit Aperture (1/e ²) without beam expander	< 2	mm
Secondary Output Wavelength	473nm (collinear to 236.5nm beam)	
Beam Ellipticity (axes ratio)	> 0.80	
Warm Up time after cold start	< 5	min
Power Consumption	< 20	W
Mechanical Package	SB1	
Operational Temperature Range	+10°C to +40°C	
Storage Temperature Range	-20°C to +60°C	

All information included in this document are subject to change without notice.

Updated data sheets can be provided on request.

For further details, please contact your local **Bright Microlaser** sales representative or visit our website at www.brightmicrolaser.com

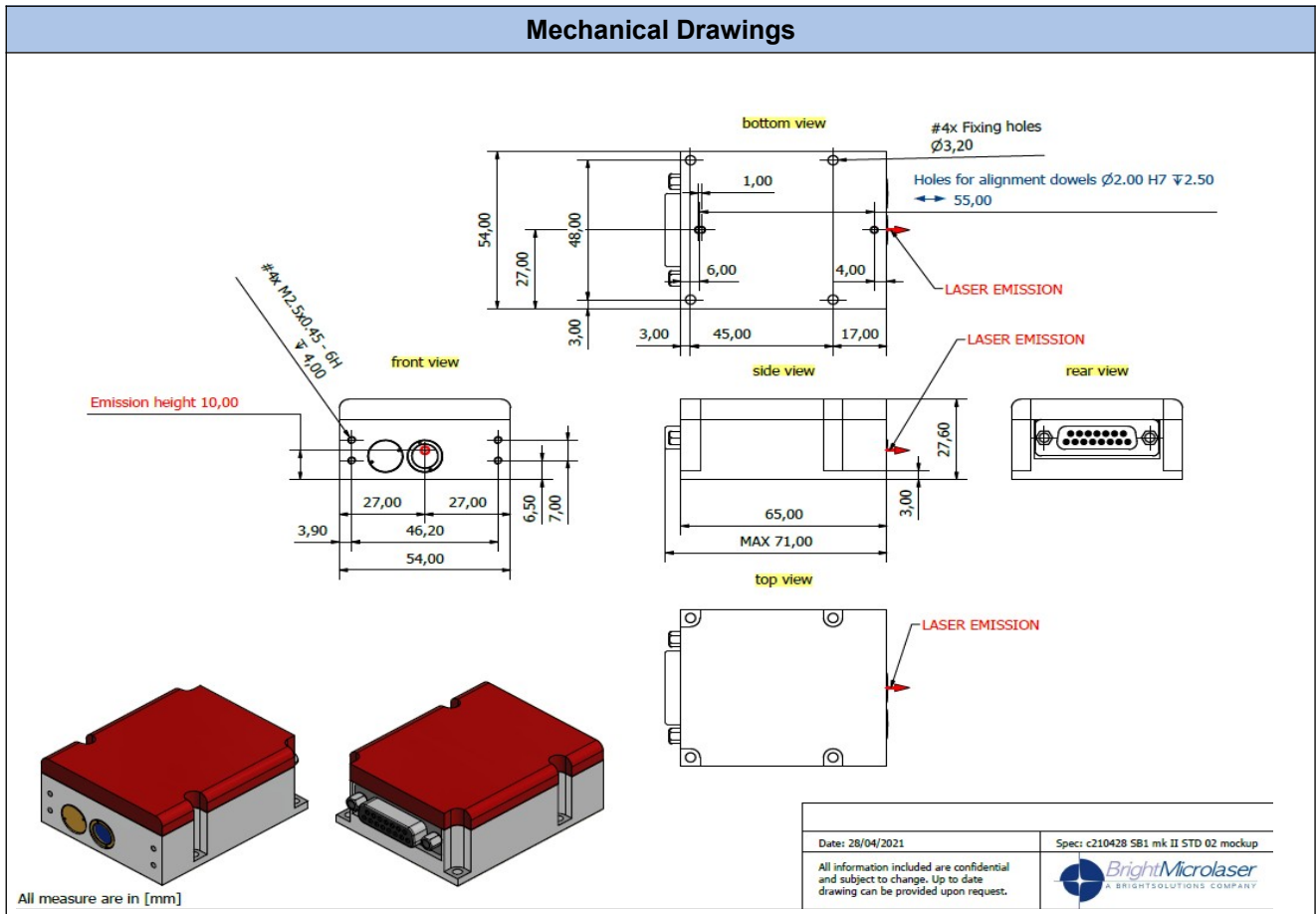
Bright Microlaser Srl

Via Artigiani, 21
27010 Cura Carpignano - PV
Italy

Phone: +39 0382 583094

e-mail: info@brightmicrolaser.com

Mechanical Drawings



Options Available:

- Beam Expander and Collimator
- Heat-sink
- Development kit
- Quick start/evaluation kit

All information included in this document are subject to change without notice.

Updated data sheets can be provided on request.

For further details, please contact your local **Bright Microlaser** sales representative or visit our website at www.brightmicrolaser.com

Bright Microlaser Srl
Via Artigiani, 21
27010 Cura Carpignano - PV
Italy
Phone: +39 0382 583094
e-mail: info@brightmicrolaser.com