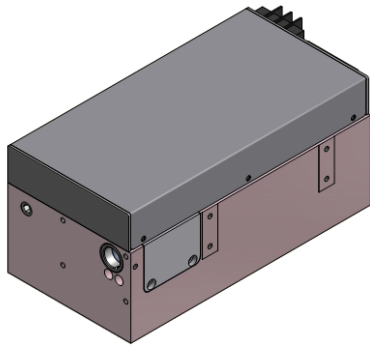


Onda 532nm

Spec. #: ND18602

High Peak Power Diode Pumped Solid State Laser



FEATURES

- _ Up to 400 uJ
- _ Short pulse duration
- _ Q-Switching : up to 100 kHz
- _ All solid state design
- _ Air Cooled
- _ Low heat waste

| Technical Specifications | Typical | |
|-----------------------------------|--------------------|-----------------|
| Output Wavelength | 532 | nm |
| Pulse energy | Up to 400 | uJ |
| Pulse Width | 2 to 10 | ns |
| Repetition Rate | Single shot to 100 | kHz |
| Polarization | Linear 100:1 | |
| Beam diameter (1/e ²) | < 2.5 (collimated) | mm |
| Beam Quality (M ²) | < 1.5 @ 10 kHz | |
| Electrical Requirements | 24 V DC IN (*) | |
| Cooling | Air Cooled | |
| Preliminary Mechanical Dimensions | 235 x 105 x 95 | mm ³ |
| Weight | < 4.5 | kg |

(*) Optional: 100-230 AC DC Power Supply

| Options Available: | Applications: |
|--|--|
| <ul style="list-style-type: none"> - Beam Expanding and Collimating optics - Red aiming beam - Low jitter - Circular polarization - Water and contact cooling | <ul style="list-style-type: none"> - Machining of glass - LIDAR - Material Processing |



All information included in this document is subject to change without notice.

Update data sheets can be provided after formal request.

For complete details, please contact your local **Bright Solutions** sales representative or visit our website at www.brightsolutions.it

Bright Solutions Srl
Via Artigiani, 27
27010 Cura Carpignano - PV
Italy
Ph. +39 0382583094
e-mail: sales@brightsolutions.it